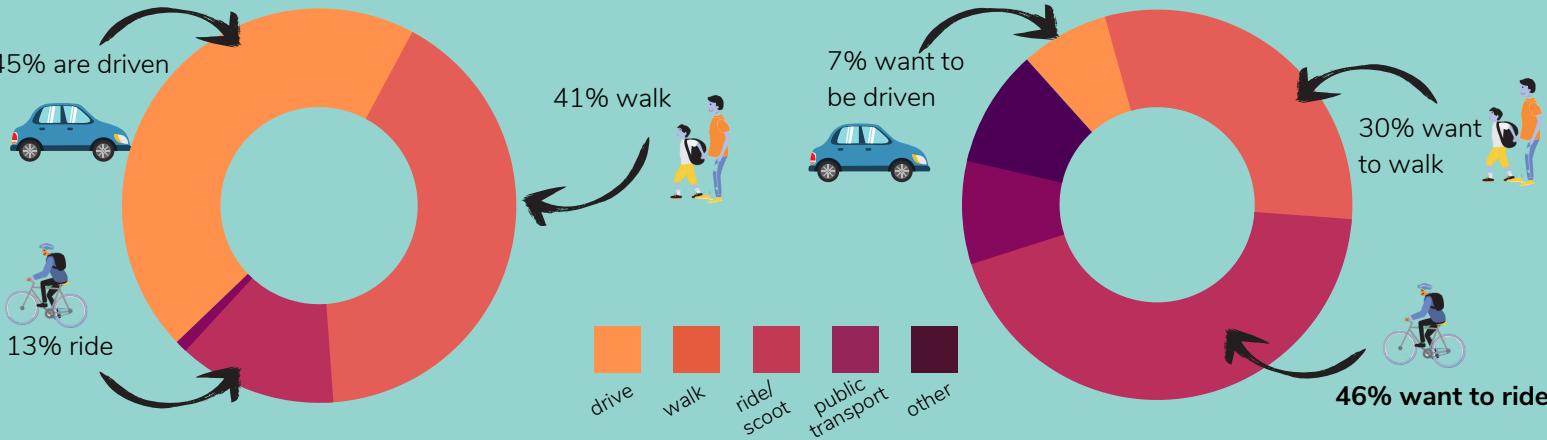




Coburg North Primary

Travel to school data - Ride and Stride Report

How students currently travel to school VS. How students would like to travel to school



15min walk

90%

of families that live within 1km travel actively to school

15min ride

40%

of families that live between 1-3km travel actively to school

95%

of CNPS children have a working bike

50%

of children are considered competent riders

93% of families live within a 15min walk or ride of school

Top 5 Ride & Stride areas to address at Coburg North Primary School:

‘What would make it easier for you & your children to walk, scoot or ride their bike to school more often?’

1. Less traffic/congestion around school gates
2. Knowledge that children have arrived safely if travelling independently/with friends
3. Programs to teach my child about road safety & independent travel
4. Supervised walking/riding groups
5. Better footpaths/bike paths/crossings near school

70% of families that drive to school live within 3kms/15min ride

- Most of these families try to travel actively to school at least once a week or once a month
- Over half are looking to switch up their trips to active transport more often, preferably to riding.



Baseline Active Travel Rate: 54% → Target Active Travel Rate: 65%