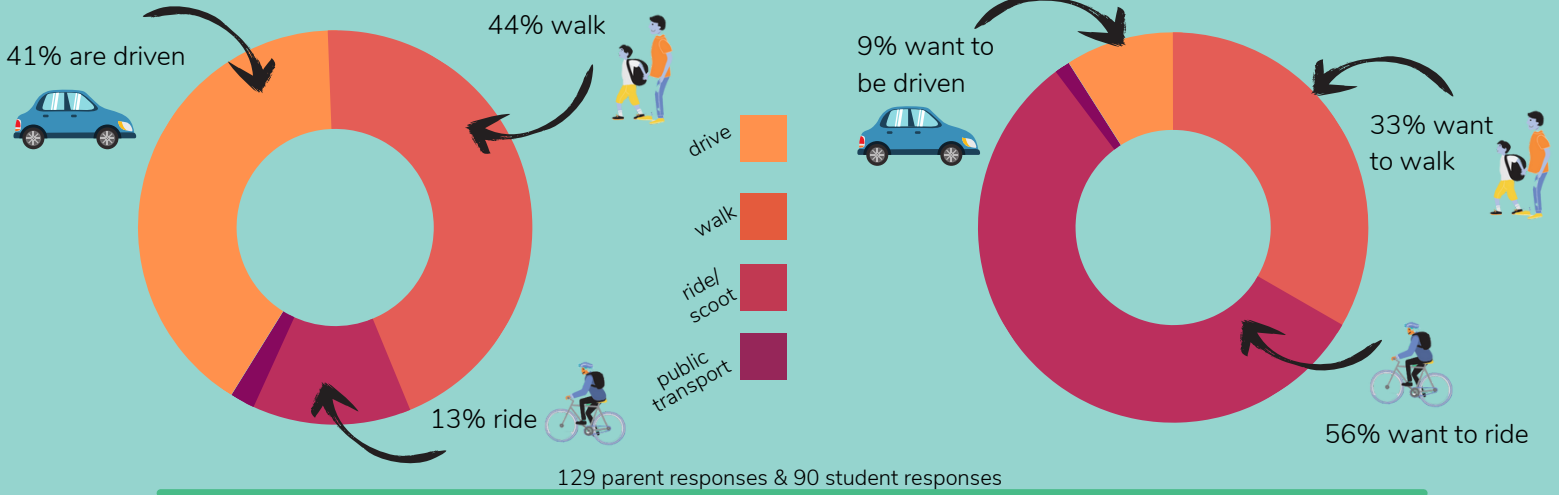




# Brunswick South West Primary

## Ride & Stride parent & student survey findings

### How students currently travel to school vs. How students would like to travel to school



# 91%



of families live within a 10min ride or a 20min walk of school

# 1.8kms

average distance families live from school

# 94%

of children have a working bike

# 49%



of children are considered safe & competent riders

From the kids

"What is one thing you like about walking or riding to school?"

"When I'm walking I sometimes see my friends and we talk all the way to school I can also see and hear the birds chirping"

"I like riding to school with my mum because I love her and we have great chats and we laugh together!"

### Top Ride & Stride areas to focus on at Brunswick South West Primary School:

'What would make it easier for you & your children to walk, scoot or ride their bike to school more often?'

1. Knowledge that my child has arrived safely if travelling independently
2. Programs to teach my child about road safety & independent travel
3. Safe cycling education for children
4. Less car traffic around the school gates



Current Active Travel Rate: 57% → Target Active Travel Rate: 67%