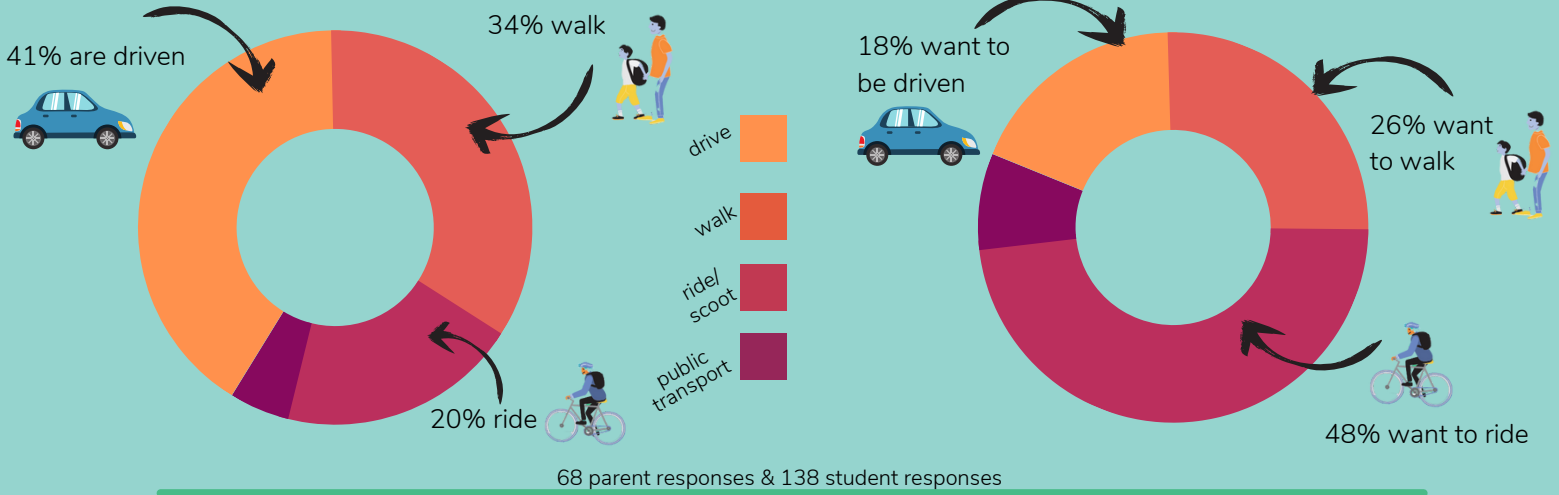


How students currently travel to school vs. How students would like to travel to school



85%



of families live within a 10min ride or a 20min walk of school

38%

of those who drive said they'd prefer to walk or ride with their children

77%

of children have a working bike

50%

of children are considered safe & competent riders



Top Ride & Stride areas to focus on at Coburg Primary School:

'What would make it easier for you & your children to walk, scoot or ride their bike to school more often?'

1. Less car traffic around the school gates
2. Knowledge that my child has arrived safely if travelling independently
3. Programs to teach my child about road safety & independent travel
4. Safe cycling education for children

From the kids

"What is one thing you like about walking or riding to school?"



Current Active Travel Rate: 54% → Target Active Travel Rate: 64%