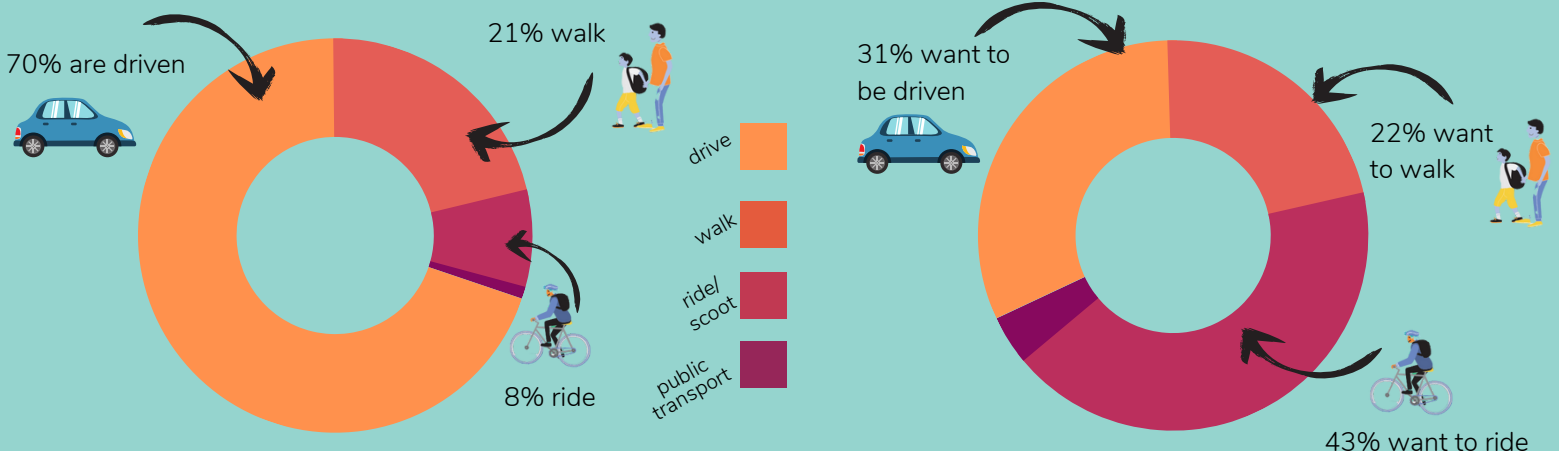


How students currently travel to school vs. How students would like to travel to school



42 parent responses & 76 student responses

83%



of families live within a 10min ride or a 20min walk of school

1 in 3

parents who drive said they'd prefer to walk or ride with their children

67%

of children have a working bike

43%



of children are considered safe & competent riders

From the kids

"What is one thing you like about walking or riding to school?"

"When I'm walking I sometimes see my friends and we talk all the way to school I can also see and hear the birds chirping"

"I like riding to school with my mum because I love her and we have great chats and we laugh together!"

Top Ride & Stride areas to focus on at Fawkner Primary School:

'What would make it easier for you & your children to walk, scoot or ride their bike to school more often?'

1. Safe cycling education for children
2. Programs to teach my child about road safety & independent travel
3. Knowledge that my child has arrived safely if travelling independently
4. Less car traffic around the school gates



Current Active Travel Rate: 30% → Target Active Travel Rate: 40%