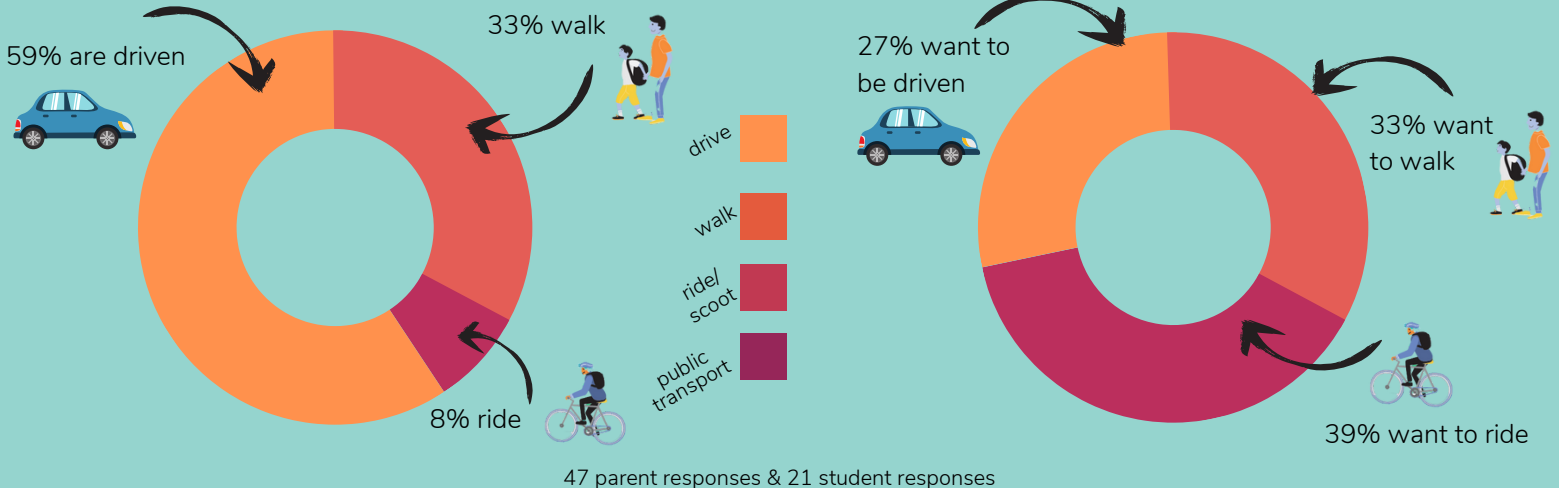


Glenroy West Primary

Ride & Stride parent & student survey findings

How students currently travel to school vs. How students would like to travel to school



47 parent responses & 21 student responses

83%



of families live within a 10min ride or a 20min walk of school

47%

of those who drive said they'd prefer to walk or ride with their children

90%

of children have a working bike

49%



of children are considered safe & competent riders

From the kids

"What is one thing you like about walking or riding to school?"

"When I'm walking I sometimes see my friends and we talk all the way to school I can also see and hear the birds chirping"

"I like riding to school with my mum because I love her and we have great chats and we laugh together!"

Top Ride & Stride areas to focus on at Glenroy West Primary School:

'What would make it easier for you & your children to walk, scoot or ride their bike to school more often?'

1. Knowledge that my child has arrived safely if travelling independently
2. Programs to teach my child about road safety & independent travel
3. Less car traffic around the school gates
4. Safe cycling education for children



Current Active Travel Rate: 41% → Target Active Travel Rate: 51%