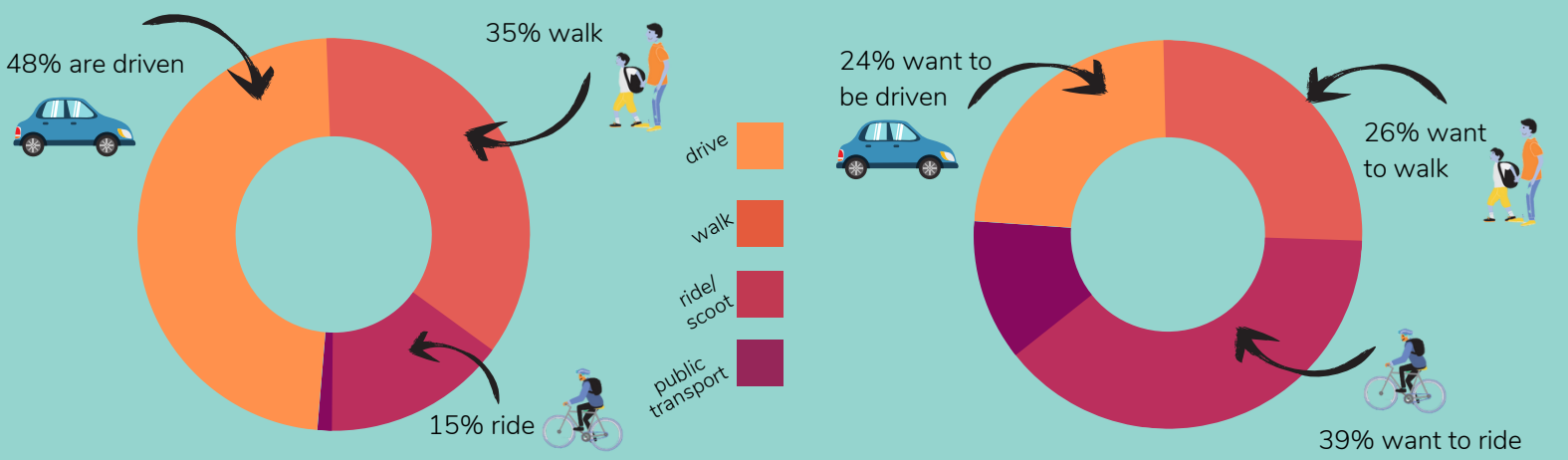


# Oak Park Primary

Ride & Stride parent & student survey findings

## How students currently travel to school vs. How students would like to travel to school



79 parent responses & 88 student responses

**91%**



of families live within a 10min ride or a 20min walk of school

**55%**

of those who drive said they'd prefer to walk or ride with their children

**86%**

of children have a working bike

**46%**



of children are considered safe & competent riders

From the kids

"What is one thing you like about walking or riding to school?"

"When I'm walking I sometimes see my friends and we talk all the way to school I can also see and hear the birds chirping"

"I like riding to school with my mum because I love her and we have great chats and we laugh together!"

### Top Ride & Stride areas to focus on at Oak Park Primary School:

'What would make it easier for you & your children to walk, scoot or ride their bike to school more often?'

1. Knowledge that my child has arrived safely if travelling independently
2. Programs to teach my child about road safety & independent travel
3. Knowledge of safe walking/riding routes to school
4. Safe cycling education for children



Current Active Travel Rate: 50% → Target Active Travel Rate: 60%